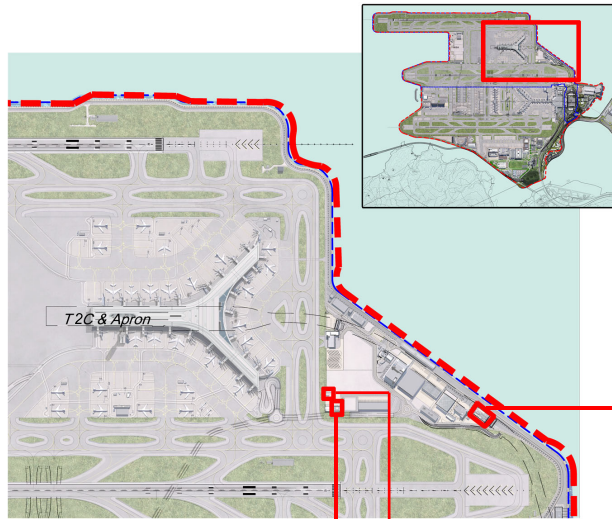
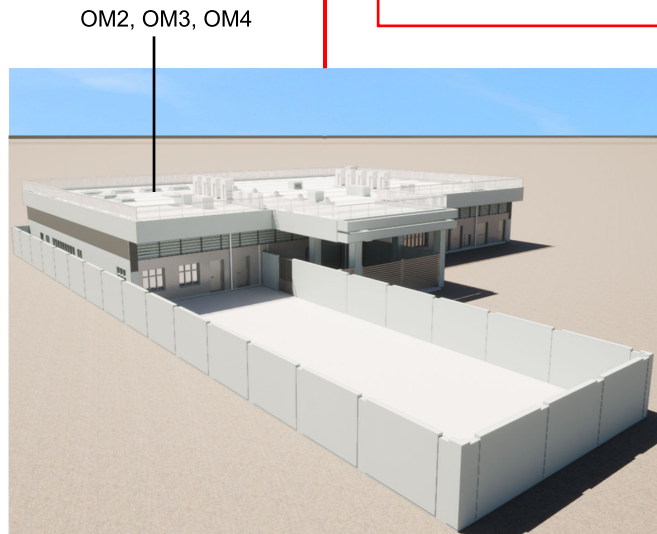


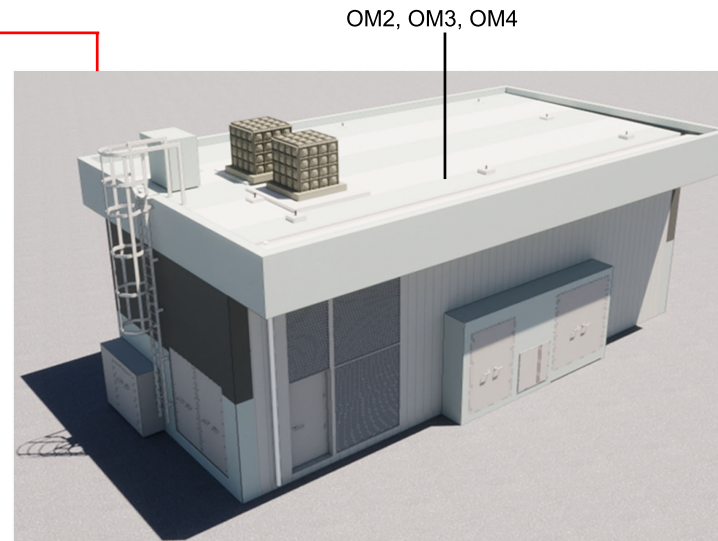
KEY PLAN



APM BHS Tunnel Vent Building



C&ED Operational Office and Kennel Area



GSE Vehicle Wash Facility

Figure 3.5.5

EXPANSION OF HONG KONG INTERNATIONAL AIRPORT INTO THREE RUNWAY SYSTEM -
LANDSCAPE AND VISUAL PLAN
CONDITION 2.18 OF ENVIRONMENTAL PERMIT (EP-489/2014)
RECOMMENDED LANDSCAPE AND VISUAL MITIGATION MEASURES FOR ANCILLARY BUILDINGS

File:
Date: 24 October 2022

**Environmental
Resources
Management**

